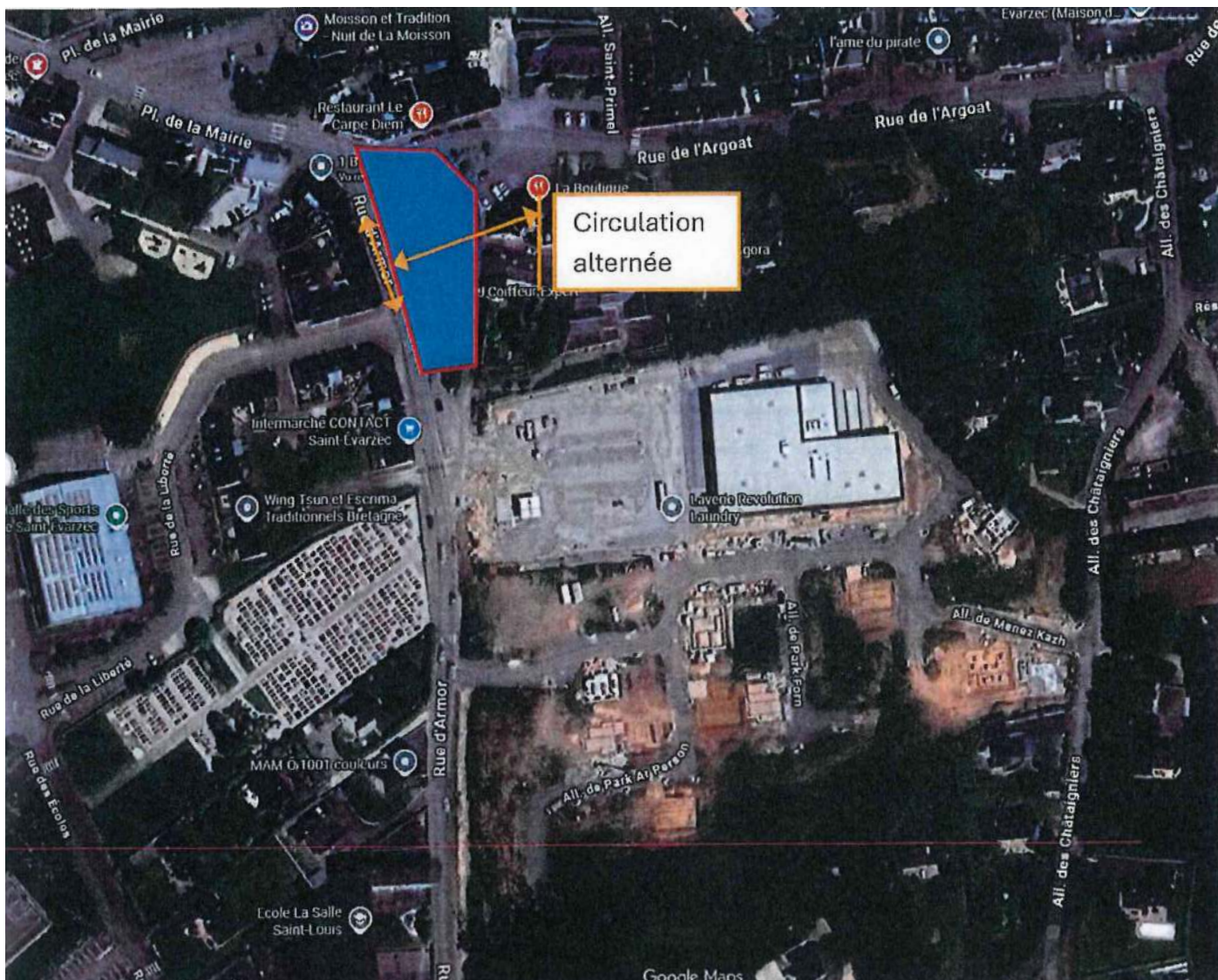
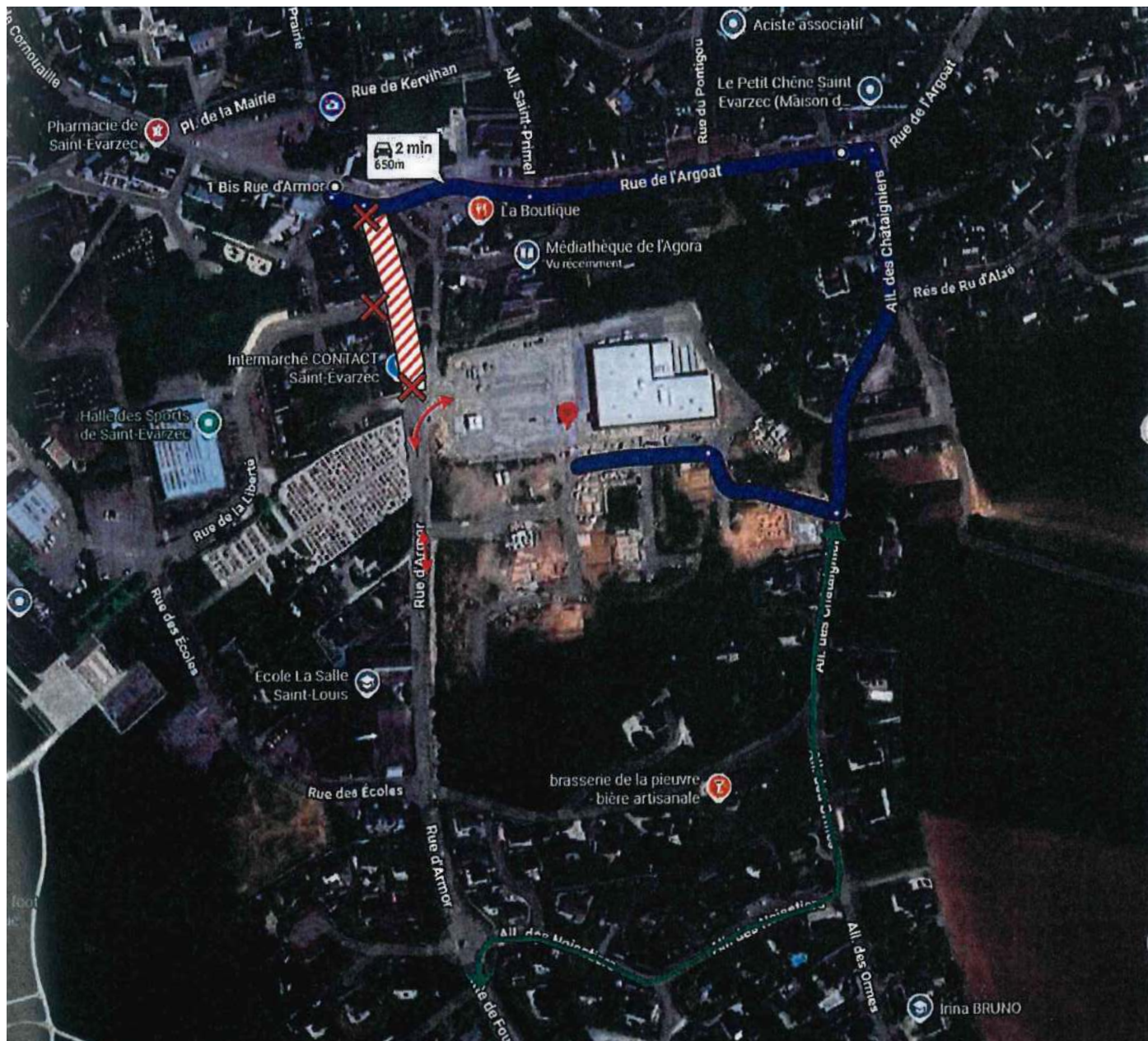






Phase N°3 du 31/08 au 11/09 :







Phase N°4 du 14/09 au 07/10 :



-  Itinéraire d'accès à Intermarché
-  Itinéraire d'accès aux commerces du bourg
-  Itinéraire d'accès général
-  Route barrée sauf riverains





Phase N°5 du 08/10 au 11/11 :



-  Itinéraire d'accès à Intermarché
-  Itinéraire d'accès aux commerces du bourg
-  Itinéraire d'accès général
-  Route barrée sauf riverains

Phase N°6 du 12/11 au 20/11 :



-  Itinéraire d'accès à Intermarché
-  Itinéraire d'accès aux commerces du bourg
-  Itinéraire d'accès général
-  Route barrée sauf riverains